

# DIAMOND BUSINESS CENTER

## FOR LEASE

8700 Auburn Folsom Road  
Granite Bay | CA



### Contact Exclusive Agents:

#### ELAINE HARTIN

[ehartin@newmarkccarey.com](mailto:ehartin@newmarkccarey.com)  
916.367.6344  
CA RE License #01047857

#### MATT HEACOX

[mheacox@newmarkccarey.com](mailto:mheacox@newmarkccarey.com)  
916.569.2314  
CA RE License #01451720

**Newmark  
Cornish & Carey**

*IN THE HEART OF GRANITE BAY  
CONVENIENTLY LOCATED BETWEEN  
ROSEVILLE AND FOLSOM*

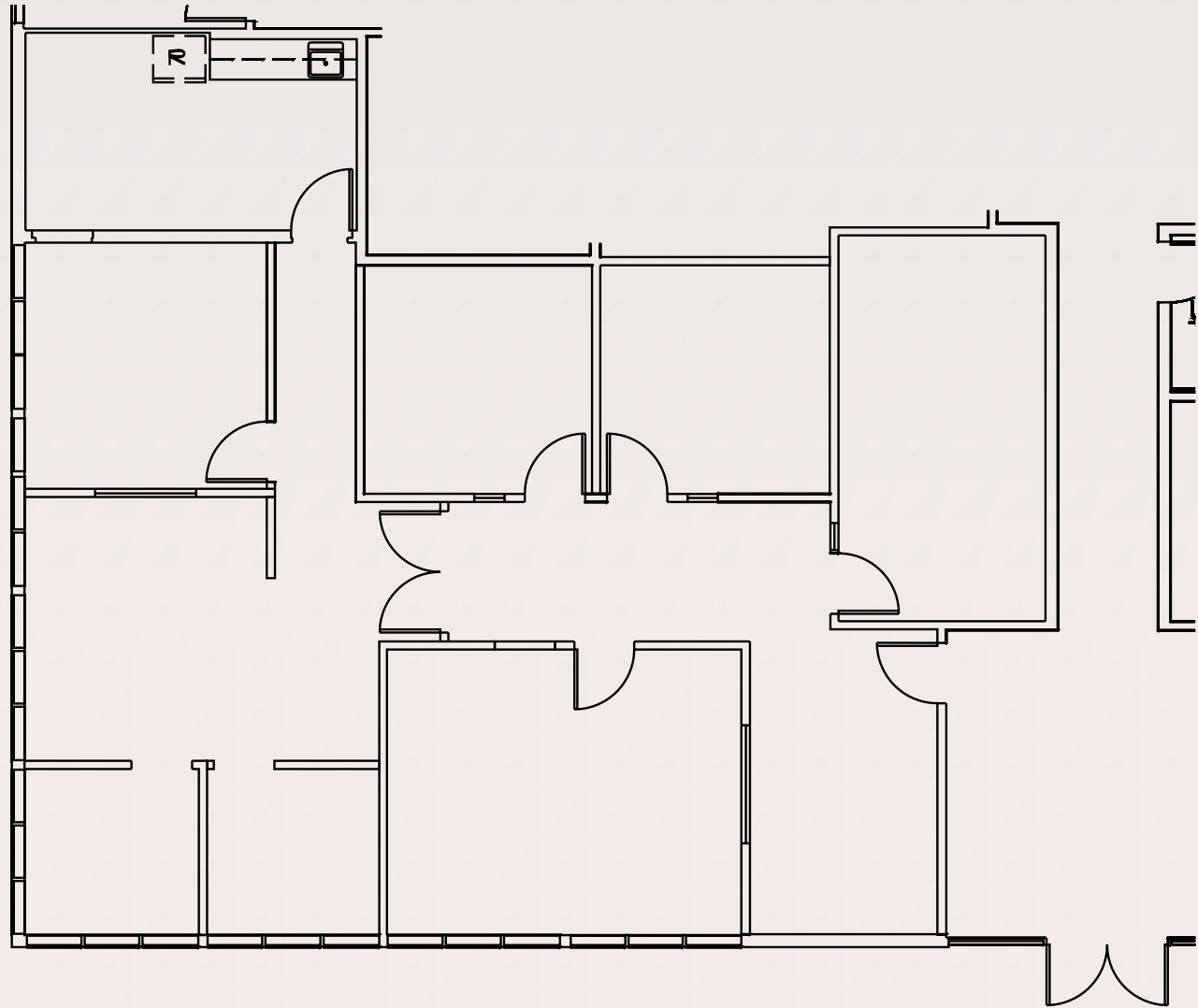




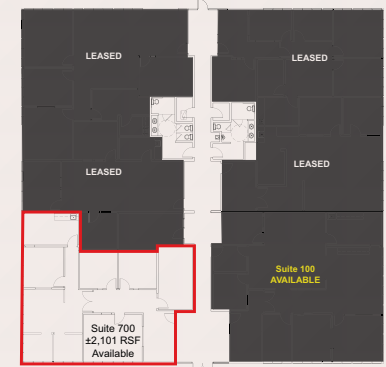
**PROJECT HIGHLIGHTS**

- Suite 700 - ±2,101 Rentable Square Feet
- Suite 100 - ±2,490 Rentable Square Feet
- Lease Rate: \$1.80 Per Rentable SF, Full Service

- Prominent Monument Signage Available
- Prestigious Granite Bay Address
- Immediate Occupancy
- Solid & Stable Ownership



Suite 700  
±2,101 Rentable SF



# DIAMOND BUSINESS CENTER



## Contact Exclusive Agents:

### ELAINE HARTIN

[ehartin@newmarkccarey.com](mailto:ehartin@newmarkccarey.com)

916.367.6344

CA RE License #01047857

### MATT HEACOX

[mheacox@newmarkccarey.com](mailto:mheacox@newmarkccarey.com)

916.569.2314

CA RE License #01451720

3005 Douglas Boulevard  
Suite 130, Roseville, Ca 95661  
Tel: 916.367.7000  
Fax: 916.367.6362

The information contained herein has been obtained from sources deemed reliable but has not been verified and no guarantee, warranty or representation, either express or implied, is made with respect to such information. Terms of sale or lease and availability are subject to change or withdrawal without notice.

08-2089.06/17

**Newmark  
Cornish & Carey**

